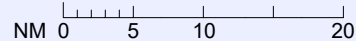


1. For description VFR - procedures see AD 2.22
2. For details see AD 2 TNCA-73 (VAC), TNCB-67 (VAC) and TNCC-67 (VAC).
3. Altitudes, elevations and heights in feet, distances in nautical miles, bearings are magnetic.

SCALE 1:1000000



VFR ROUTE
CURAÇAO FIR
OVERVIEW

COMMUNICATION

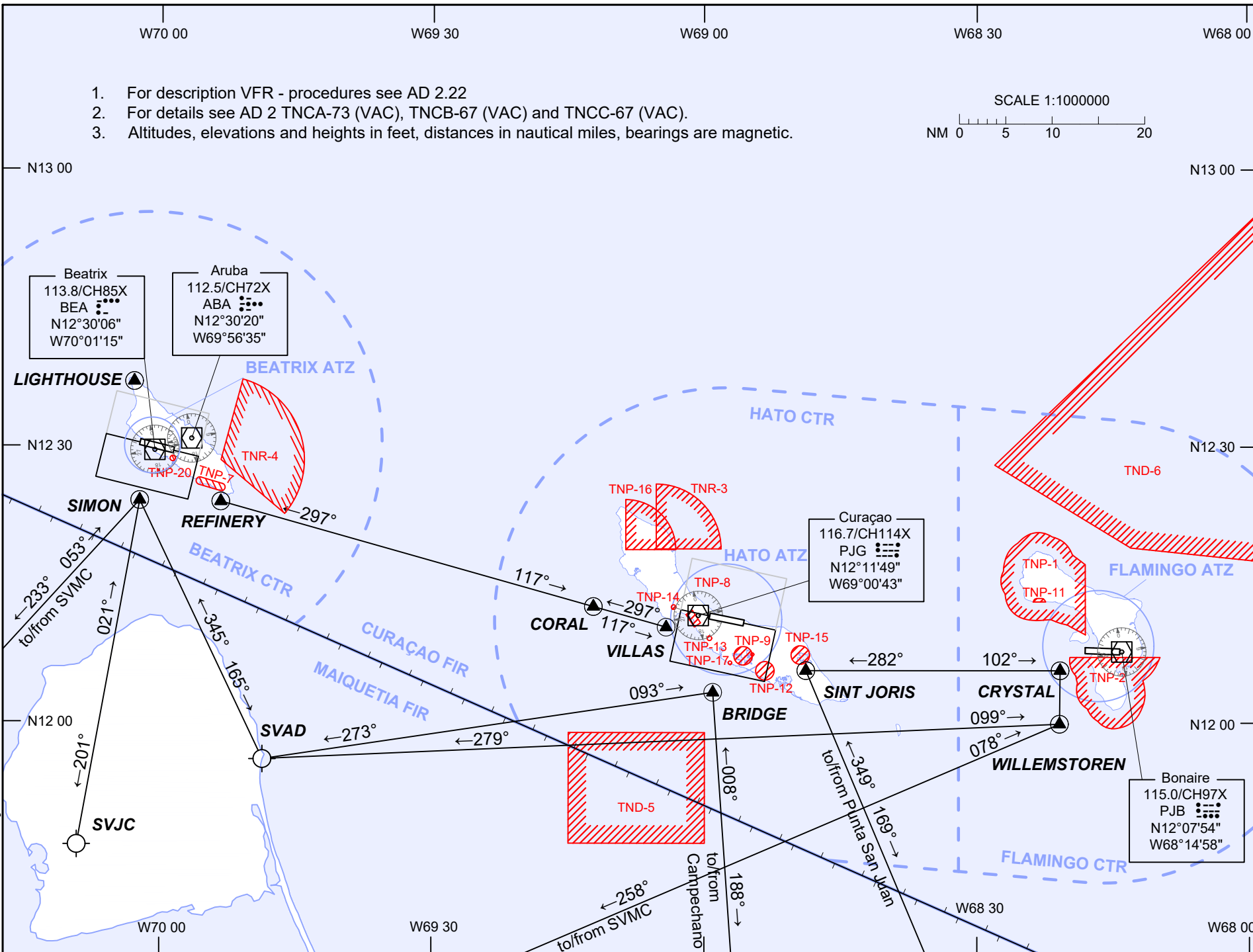
Curaçao Control	124.1/127.1
Curaçao Terminal	119.8
Hato:	
TWR	118.3
ATIS	132.6
Flamingo:	
TWR	118.7
ATIS	132.3
Beatrix:	
APP	120.9
TWR	118.0
ATIS	132.1

SPECIAL USE
AIRSPACE

TNP-1	SFC - 6000
TNP-2	SFC - 6000
TNP-7	GND - 2500
TNP-8	SFC - 400
TNP-9	SFC - 2500
TNP-11	SFC - 2500
TNP-12	SFC - 2500
TNP-13	SFC - 2500
TNP-14	SFC - 900
TNP-15	SFC - 2500
TNP-16	SFC - 2500
TNP-17	SFC - 2500
TNP-19	SFC - 2500
TNP-20	GND - 2500
TNR-3	SFC - NOTAM
TNR-4	SFC - NOTAM
TND-5	SFC - 10000
TND-6	SFC - 27000 by NOTAM

MAGNETIC
VARIATION

ARP TNCA	11°W
ARP TNCB	12°W
ARP TNCC	12°W



CHANGES: Curaçao Terminal